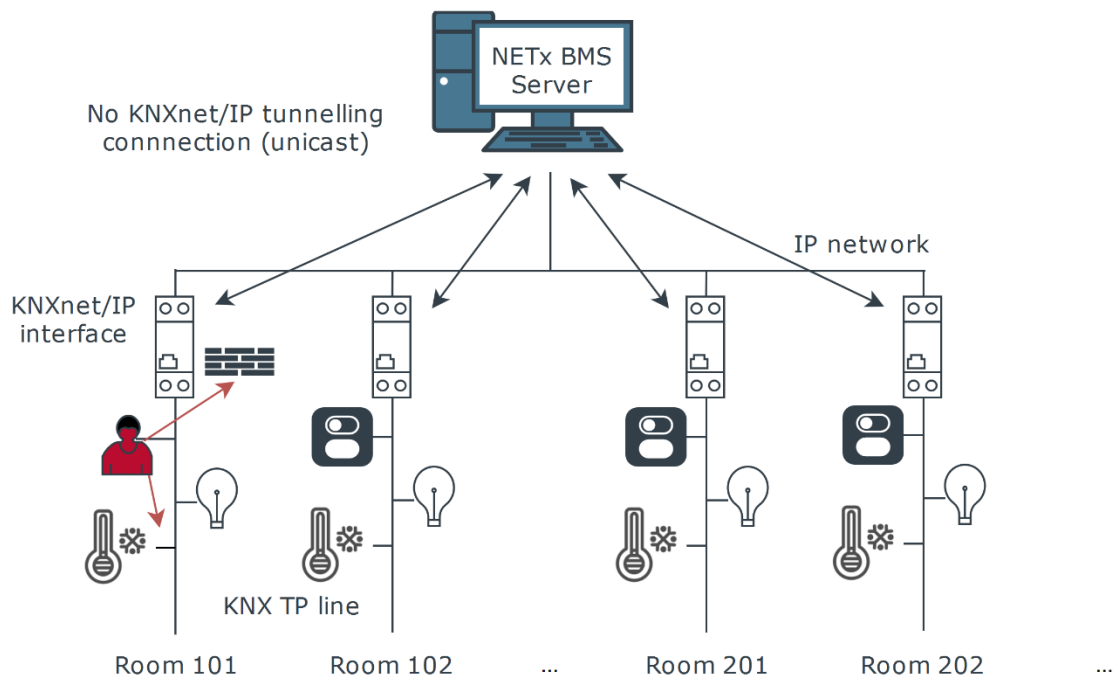


Building management systems for providing security in existing KNX projects: Organizational measures and device monitoring

Part 3: Secure building automation through management solution (NETx BMS Server)

Example 4: Secure, central management by using building management software

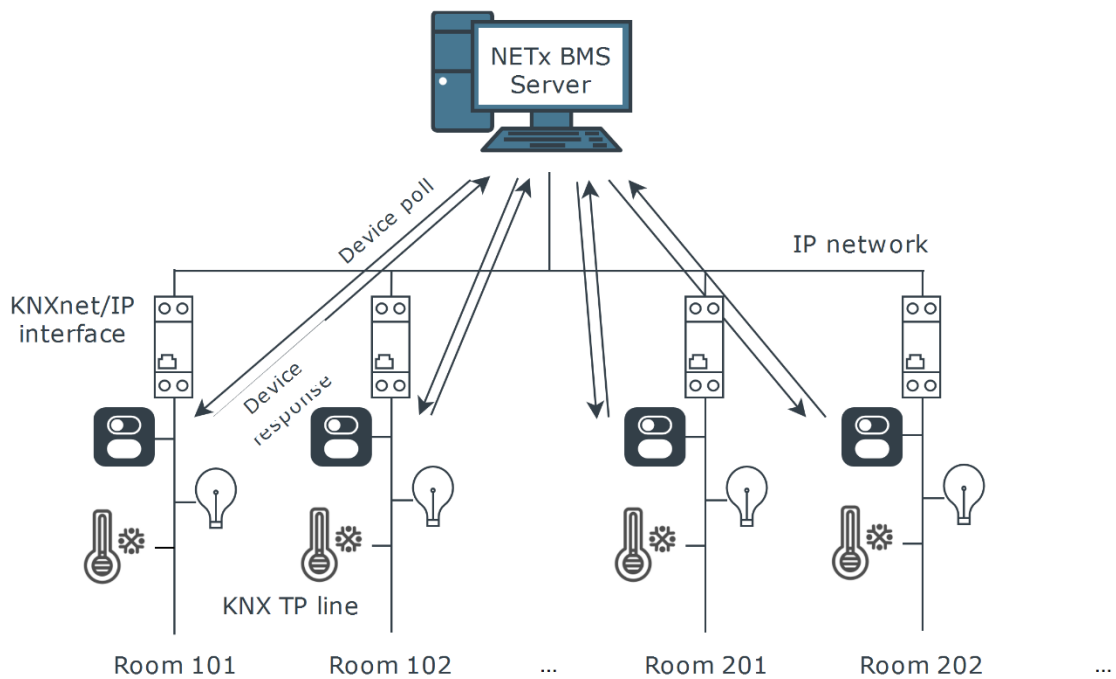
The building management solution, NETx BMS Server in this case, is part of the IP network and communicates via KNXnet/IP tunneling connections with the KNXnet/IP interfaces and/or routers. Via these connections the server has access to all KNX lines. Thus, central commands can be implemented in the server directly and carried out from the customer via visualization.



Intrusion detection with NETx BMS Server

Example 5: Device monitoring

In this example, the management solution NETx BMS Server communicates separately with the devices of each room. The Server sends a device poll to the according device and usually receives a device response.



If the device doesn't answer within appropriate time, because it got hacked, an alarm is raised. Due to multiple point-to-point tunneling connections bandwidth problems do not apply. For more information about the NETx BMS Server please visit <https://www.netxautomation.com/netx/en/products/server/bms-server>

Part 1: Status of security in building automation

Part 2: Security in existing KNX projects